

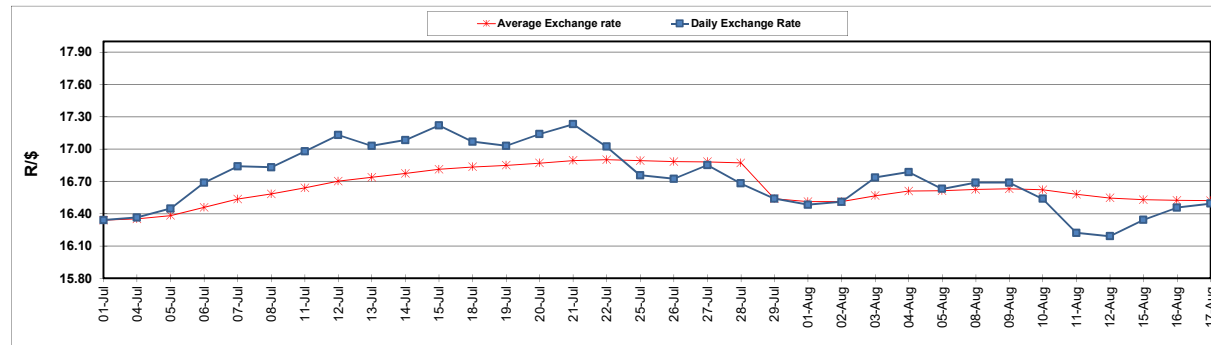
	PETROL 95 ULP	PETROL 93 ULP & LRP	DIESEL 0.05%	DIESEL 0.005%	ILL. PAR.
GAUTENG PUMP PRICE (SA c/l) AS FROM 03/08/2022	2,542.000	2,499.000	-	-	-
WHOLESALE PRICE (SA c/l) AS FROM 03/08/2022	-	-	2,452.440	2,461.840	1,842.288
SINGLE NATIONAL MAXIMUM RETAIL PRICE	-	-	-	-	2,431.000
BASIC FUEL PRICE - 17/08/2022 (SA c/l)	1,246.621	1,219.039	1,501.991	1,526.245	1,509.532
PRESS RELEASE CONTRIBUTION TO BFP 03/08/2022 - 17/08/2022 (SA c/l)	1,482.410	1,439.410	1,600.630	1,610.030	1,624.128
UNIT OVER/(UNDER) RECOVERY - 17/08/2022 (SA c/l)	235.789	220.371	98.639	83.785	114.596
AVERAGE BASIC FUEL PRICE 29/07/2022 - 17/08/2022	1,272.383	1,245.317	1,427.069	1,444.316	1,474.876
AVERAGE UNIT OVER/(UNDER) RECOVERY 29/07/2022 - 17/08/2022	254.385	238.450	208.490	201.286	180.109

ANALYSIS MOVEMENT OF AVERAGE OVER/(UNDER) RECOVERY

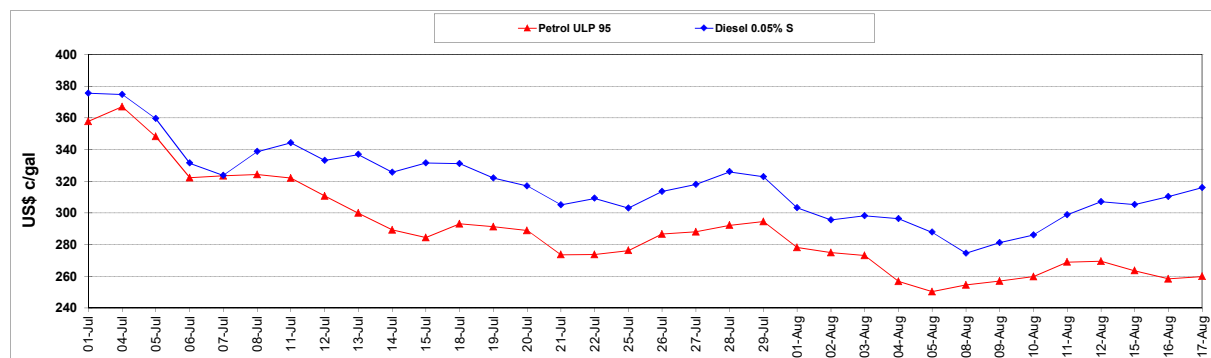
	PETROL 95	PETROL 93	DIESEL 0.05%	DIESEL 0.005%	ILL. PAR.
- MOVEMENT IN INTERNATIONAL PRODUCT PRICES	227.375	212.015	178.197	170.626	148.801
- MOVEMENT IN EXCHANGE RATE	27.009	26.435	30.293	30.659	31.308
AVERAGE UNIT OVER/(UNDER) RECOVERY 29/07/2022 - 17/08/2022	254.385	238.450	208.490	201.286	180.109

R/\$ EXCHANGE RATE - (R/\$16.4928 - 17/08/2022)

EXCHANGE RATE USED IN BASIC FUEL PRICE



INTERNATIONAL PRODUCT PRICES OF BASKET USED IN BASIC FUEL PRICE



BASIC FUEL PRICE IN SA CENTS PER LITRE

